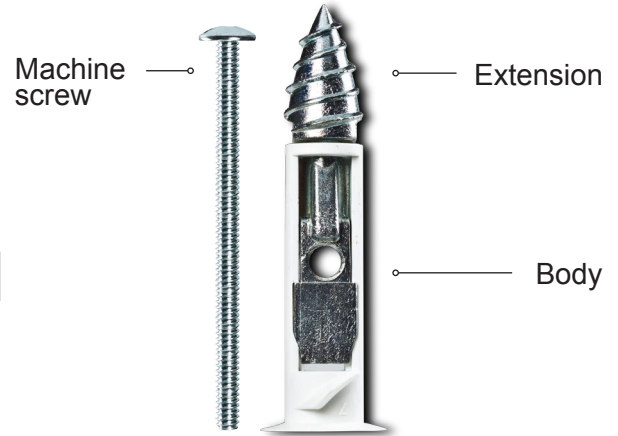




**SPECIFICATIONS, LISTINGS AND APPROVALS**

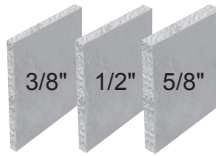
Available Diameters: 1/8", 3/16" & 1/4"  
 Machine Screw Material: Carbon Steel  
 Machine Screw Finish: Zinc plated  
 Extension Material: Die Cast Zinc Alloy / Plain polish. ASTM B240-10 & 13  
 Body Material: Nylon



**KEY FEATURES & BENEFITS**

- ▶ Fast & easy to install
- ▶ Self-drilling
- ▶ Toggle action
- ▶ All you need is a screwdriver
- ▶ Extra strong holding power
- ▶ Supplied with a machine screw

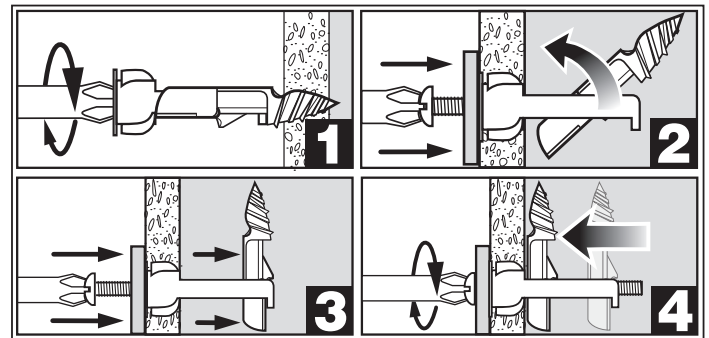
**MATERIALS**



SAFE WORKING LOADS			DRYWALL 3/8"		DRYWALL 1/2"		DRYWALL 5/8"	
Product number	Material	Size	TENSION lb	SHEAR lb	TENSION lb	SHEAR lb	TENSION lb	SHEAR lb
360C	Zinc/Nylon	1/8"x 2"	42	75	50	90	75	135
361C	Zinc/Nylon	1/8"x 3"	42	75	50	90	75	135
363C	Zinc/Nylon	3/16" x 2"	50	83	60	100	90	150
364C	Zinc/Nylon	3/16" x 3"	50	83	60	100	90	150
367C	Zinc/Nylon	1/4" x 3"	58	92	70	110	105	165
368C	Zinc/Nylon	1/4"x 4"	58	92	70	110	105	165

**INSTALLATION INSTRUCTIONS**

1. Using a screwdriver, push the tip of the DrillerToggle® into drywall and turn clockwise until flush with wall.
2. Insert the screw through the object you need to affix and into the DrillerToggle®.
3. Push the screw until you feel a resistance.
4. Turn clockwise into the anchor until firmly in place.



**CAUTION :**

Always wear safety glasses.  
 Do not use in insulated drywall.

**TOOLS REQUIRED**



**NOTES:**

- **COBRA can not be held responsible for any failure due to improper installation.**
- Safe working loads represent a safety factor of 2:1 from ultimate test loads.
- Always follow the recommended weight limits for a safe installation.



May, 12, 2017