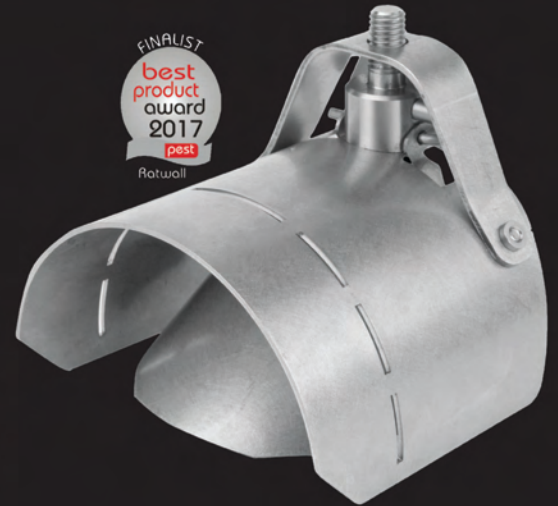


Ratwall Stainless Steel Rodent Exclusion Device

Ratwall is a robust and durable Stainless Steel device for preventing the passage of rodent in drains.



		Pipe diameter			
	SKU	4"	110mm	6"	160mm
Ratwall 110	RAT110	X	X		
Ratwall 150	RAT150			X	X

Material

Stainless Steel 300 Series

Application:

Ratwall is to be installed within drainage inspection chambers. The device is configurable for the inlet or outlet position.

Security:

Ratwall has a secure expanding friction fit within the pipe. Ratwall cannot become dislodged and lost into the drainage line due to integrated stopper.

Installation:

Ratwall has an integrated mechanism to compress its diameter for a low force fit. Ratwall may be installed from street level with the optional installation pole. Refer to installation instructions.

Maintenance:

Ratwall is a maintenance free unit, however it should be inspected at 6 monthly intervals, along with the overall condition of the drain. Ratwall must be removed before and replaced after any drainage maintenance work.

Flow restriction:

Ratwall opens fully for maximum flow with no hinge or mechanism within the pipe diameter.

